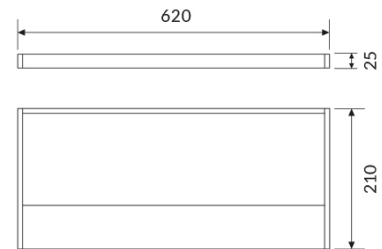
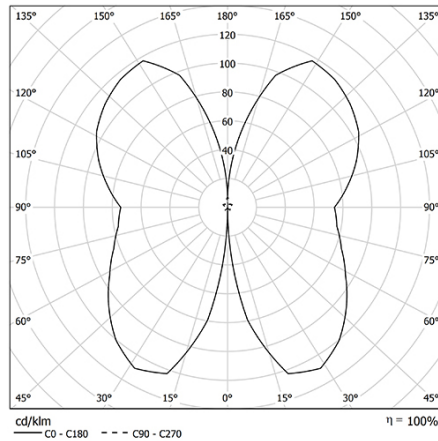


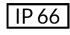



SCOUT WALL

An architectural element for outdoor wall installation. LGP (Light Guide Panel) diffuser in backlight plexiglass. UGR <22



CODE		FLUX	SIZE	CERTIFICATIONS
91PC9L3W66	9W 3000K	180lm	620mm	  

Optic

LGP (Light Guide Panel) diffuser in backlight plexiglass with microncisions

Specifications

CRI>90

McAdams 3

Life Time: L80/B10 >50.000h

5 years complete warranty

Eye safety: RG0/RG1 in accordance with EN62471:2009

Body

Manufactured from pressure die-cast aluminum with epoxy powder coating.

Legal references

In compliance with the safety standards EN 60 598-1 and UNI EN 12464-1 (lighting for working places).

Wiring

RE: Built-in wiring 230-240V/50-60Hz with power factor >0.97.